



## Spirent **CyberFlood**

Test the security, performance and scalability  
of your app-aware infrastructure

## Test and Enforce Application Policies

Verify the accuracy of application detection engines and policies by testing with thousands of popular application profiles

Evaluate the impact of security policies on application performance with intermixed signature and DDoS attacks

Recreate production-level mixes of application traffic and test the effectiveness of application QoS policies

## Benchmark Performance and Capacity

Benchmark scalability and network capacity by simulating thousands (or hundreds of thousands) of real users on the network

Run "what-if" scenarios and measure the performance impact of architecture or configuration changes

Validate proof-of-concept designs by testing with realistic mixes of application traffic

## Validate Network Security

Verify the ability of the network device to detect and mitigate thousands of known and zero day attacks

With CyberFlood fuzzing test the resiliency of network devices and deployed protocols by verifying the ability to deal with millions of unexpected and malicious inputs

Test device capabilities to inspect traffic for malware, infected hosts, unwanted URLs and spam and take appropriate action

## NetSecOPEN tests Built-in

NetSecOPEN is a network security industry group where network security vendors, tool vendors, labs and enterprises collaborate to create open and transparent testing standards.

## The Security and Application Challenge

The deployment of security application-infrastructure brings with it innovative capabilities for managing traffic, security and Quality-of-Service (QoS) policies. However, to accurately test application-aware infrastructures, it is critical to generate realistic packet payload that emulates actual application traffic on your network.

With many thousands of applications on the network and hundreds of new ones being released every day on millions of devices, QA, engineering and IT teams are struggling to quickly and effectively test, validate and roll-out their app-aware systems and networks.

## The Solution: CyberFlood

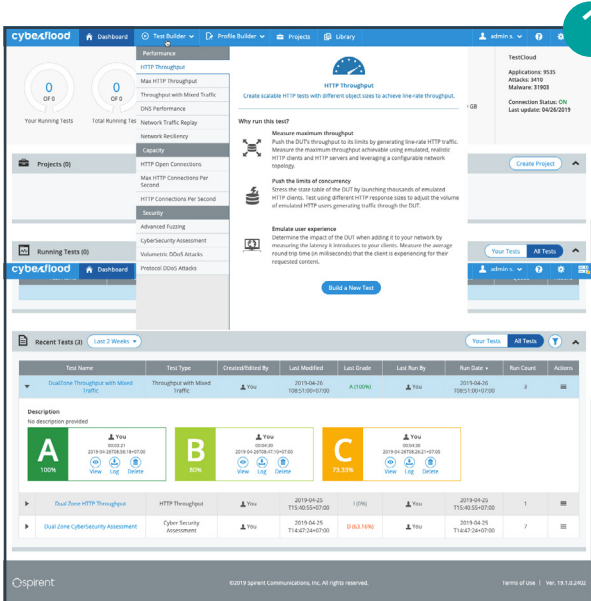
CyberFlood is a powerful, easy-to-use test solution that generates realistic application traffic and attacks to test the performance, scalability and security of today's application-aware network infrastructures.

Unlike other test solutions that use "fake" traffic with the same packet payload over and over again, CyberFlood provides 1G to 100 Gbps on a variety of platforms for stateful traffic testing with authentic, customizable payloads for realistic security, load, and functional testing.

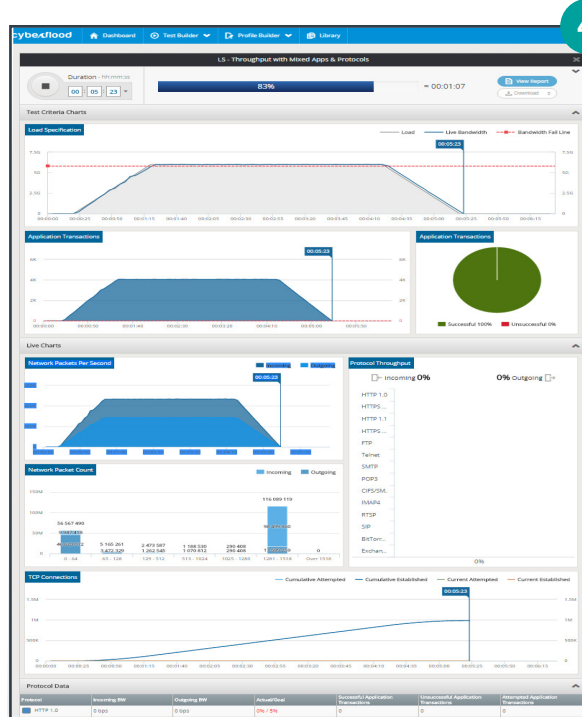
In addition, CyberFlood keeps up to date with the latest Malware, DDoS and exploits to test the effectiveness of security operations.

# Test Next-Generation Security and Content-Aware Solutions

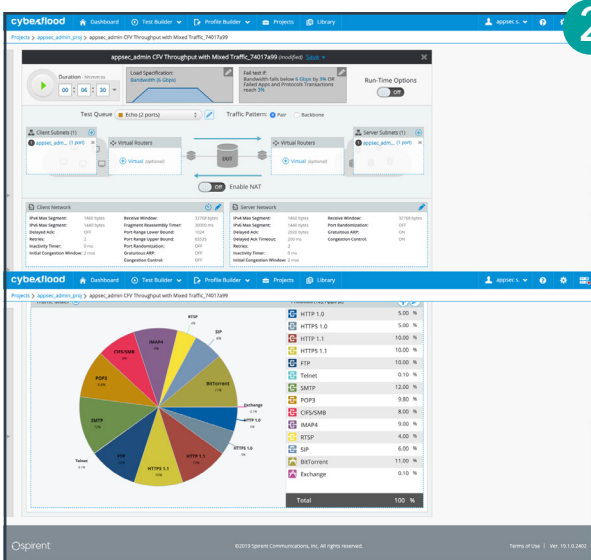
Application Servers | Cloud and Virtual Network Testing  
 Multi Play Services | Network Attack Response | Network Devices  
 Network Security | Web Applications | Next-Generation Firewalls



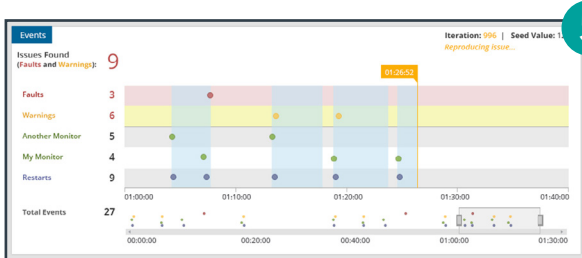
1



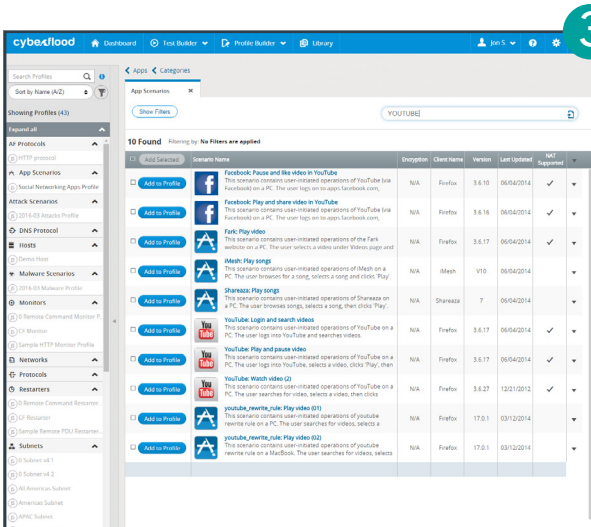
4



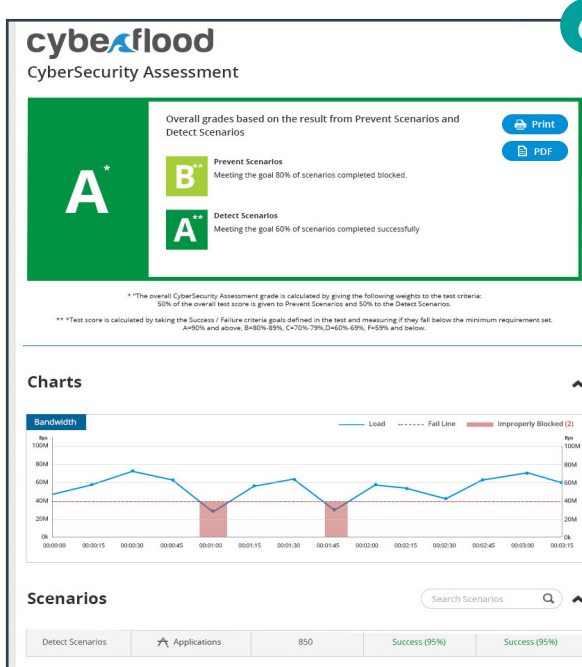
2



5



3



6

- 1 Get started quickly by choosing a pre-built test template
- 2 Drag and drop traffic profiles into the player to easily customize tests
- 3 Thousands of the latest apps and attacks are at your finger tips via the continually updated Spirent TestCloud
- 4 Results are delivered in real-time in a customizable reporting interface
- 5 Plus, test for Zero Day attacks with built in fuzzing capabilities
- 6 At-a-glance test grade reports showcase levels of Pass/Fail criteria for each new test run



## CyberFlood Available on Multiple Platforms



**C1 Appliance** - Portable bench level testing (10G/1G)

**CF20 Appliance** - Self-contained 1/10/40/100G testing

**C100-S3 Appliance** - High-end service provider/carrier grade performance

**CyberFlood Virtual** - Software based application and security testing framework for virtual and cloud environments

### About Spirent Communications

Spirent Communications (LSE: SPT) is a global leader with deep expertise and decades of experience in testing, assurance, analytics and security, serving developers, service providers, and enterprise networks.

We help bring clarity to increasingly complex technological and business challenges.

Spirent's customers have made a promise to their customers to deliver superior performance. Spirent assures that those promises are fulfilled.

For more information visit: [www.spirent.com](http://www.spirent.com)

### Security



Find and fix vulnerabilities quickly

Cyberflood includes thousands of attacks, malware and DDoS vectors, so you can test any mix of attacks and applications to ensure network security.

- Continually updated database of malicious content
- Validate security against thousands of attack profiles
- Test any mix of attacks and applications
- Shorten resolution time with smart remediation tools
- Virtually unlimited test cases with Advanced Fuzzing
- Thousands of up-to-date malware samples

### Realism



Test your network, your traffic, your reality

CyberFlood includes the Spirent TestCloud™ for access to thousands of applications so you can generate traffic with authentic payloads for realistic security, load and functional testing.

- Create tests with the latest apps from the Spirent TestCloud
- Capture and replay your network application traffic
- Create custom tests for unique apps and protocols
- Test advanced HTTPS and TLS traffic at load with high-strength cyphers and certificates

### Performance\*



Extreme scale performance

CyberFlood is the world's highest performing connection rate tester for HTTP, with more than 2x the current industry standard, giving you the power to push devices and networks to their limits.

- Stateful traffic generation from 1G to 100 Gbps rates
- >8.5M HTTP connections/second – the highest in the industry
- Realistic application packet payloads
- Over 170 million sustained connections per appliance

\* Performance only reflects C100-S3 capabilities

### Agility



Test now, not months from now

The intuitive web-based CyberFlood UI makes it easy to design tests no matter what your experience level, so you can accelerate testing and complete projects more efficiently.

- Get started quickly with easy-to-use test methodologies
- Customize tests easily with the intuitive, browser-based UI
- Cloud-based content delivery
- Made for teams: share projects, tests, and results
- Cyber Range capabilities



### Contact Us

For more information, call your Spirent sales representative or visit us on the web at [www.spirent.com/ContactSpirent](http://www.spirent.com/ContactSpirent).

[www.spirent.com](http://www.spirent.com)